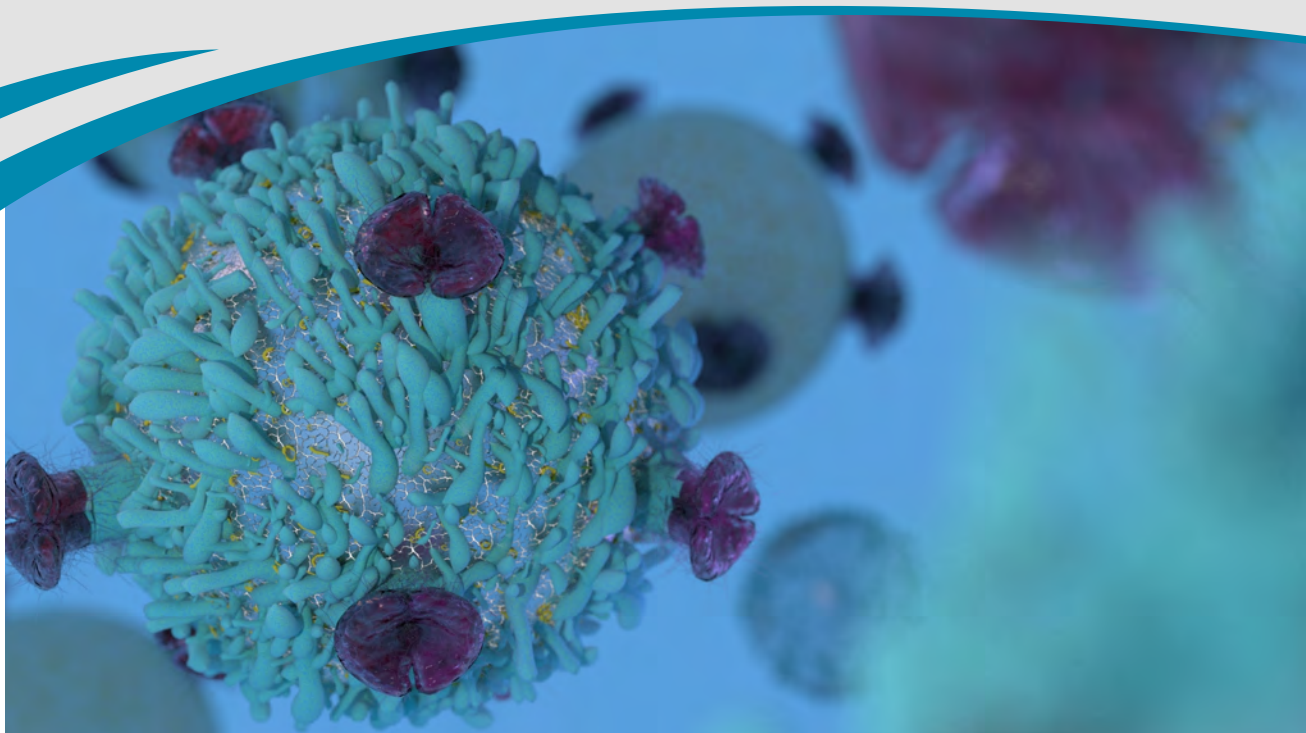


# INFLAMMATION CELL BY CELL



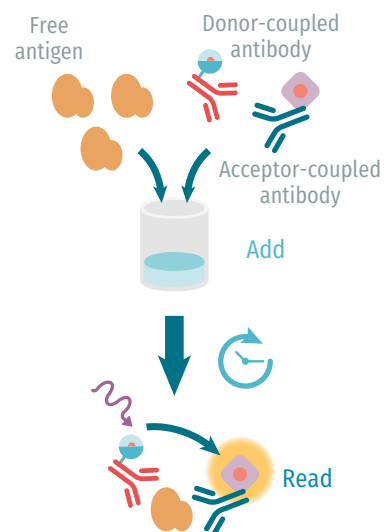
## HTRF® SOLUTIONS FOR EACH CELL TYPE

Inflammatory processes are complex and involve multiple cell subtypes that interact with each other. Each subtype (T cells, B cells, NK cells) expresses specific intra-cellular markers and secretes unique cytokine panels.

Cisbio cell-based assays offer a unique solution to monitor specific cellular activation by measuring cellular content and cytokine release.

### Cisbio Add-and-read assays

- Cell-based
- Low sample volume (16 µL)
- Intra-cellular phospho-proteins
- Intra-cellular transcription factors
- Released cytokines and biomarkers



HTRF Technology, a powerful, easy alternative to ELISA & Western Blot

- Easy add-and-read protocol saves you time with NO washing steps
- Low sample volume consumption helps save laboratory resources

## T CELLS

| SUBTYPE        | PRODUCT            | SIZE      | PART#       |
|----------------|--------------------|-----------|-------------|
| Cytotoxic CD8+ | STAT1 phospho-Y701 | 500 tests | 63ADK026PEG |
|                | Granzyme B         | 500 tests | 63ADK095PEG |
|                | IFN $\gamma$       | 96 tests  | 62HIFNGPET  |
|                | TNF $\alpha$       | 96 tests  | 62HTNFAPET  |
| T reg          | STAT5 phospho-Y694 | 500 tests | 64AT5PEG    |
|                | IL10               | 500 tests | 62HIL10PEG  |
|                | TGF $\beta$ 1      | 500 tests | 62HTGFBPEG  |
| NKT            | GM-CSF             | 500 tests | 62HGMCSFPEG |
|                | IFN $\gamma$       | 96 tests  | 62HIFNGPET  |
|                | TNF $\alpha$       | 96 tests  | 62HTNFAPET  |
| TH1            | STAT1 phospho-Y701 | 500 tests | 63ADK026PEG |
|                | IL2                | 96tests   | 62HIL02PET  |
|                | IL10               | 500 tests | 62HIL10PEG  |
|                | IFN $\gamma$       | 96 tests  | 62HIFNGPET  |
|                | TNF $\alpha$       | 96 tests  | 62HTNFAPET  |
| TH2            | STAT5 phospho-Y694 | 500 tests | 64AT5PEG    |
|                | IL4                | 500 tests | 62HIL04PEG  |
|                | IL5                | 500 tests | 62HIL05PEG  |
|                | IL10               | 500 tests | 62HIL10PEG  |
|                | IL31               | 500 tests | 62HIL31PEG  |
| TH9            | STAT3 phospho-Y705 | 96 tests  | 62AT3PET    |
|                | IL10               | 500 tests | 62HIL10PEG  |
| TH17           | STAT3 phospho-Y705 | 96 tests  | 62AT3PET    |
|                | CCL20              | 500 tests | 62HCC20PEG  |
|                | IL17               | 96 tests  | 62HIL17PET  |

## B CELLS

| SUBTYPE            | PRODUCT       | SIZE      | PART#      |
|--------------------|---------------|-----------|------------|
| B-2 (Follicular)   | IL2           | 96 tests  | 62HILPET   |
|                    | IL4           | 500 tests | 62HIL04PEG |
|                    | IL6           | 96 tests  | 62HIL06PET |
|                    | TNF $\alpha$  | 96 tests  | 62HTNFAPET |
| B reg              | IL10          | 500 tests | 62HIL10PEG |
| Be-1 (Effector 1)  | IL12          | 500 tests | 62HIL12PEG |
|                    | IFN $\gamma$  | 96 tests  | 62HIFNGPET |
| Be-2 (Effector 2)  | IL2           | 96 tests  | 62HILPET   |
|                    | IL4           | 500 tests | 62HIL04PEG |
| MZ (Marginal zone) | IL6           | 96 tests  | 62HIL06PET |
|                    | CCL2 (MCP1)   | 500 tests | 62HCCL2PEG |
|                    | CXCL10 (IP10) | 500 tests | 62HCX10PEG |

## NK CELLS

| PRODUCT               | SIZE      | PART#       |
|-----------------------|-----------|-------------|
| AKT phospho-S473      | 96 tests  | 64AKSPET    |
| ERK phospho-T202/Y204 | 96 tests  | 64AERPET    |
| SLP76 phospho-S376    | 96 tests  | 63ADK076PET |
| Granzyme B            | 500 tests | 63ADK095PEG |
| GM-CSF                | 500 tests | 62HGMCSFPEG |
| IL10                  | 500 tests | 62HIL10PEG  |
| IFN $\gamma$          | 96 tests  | 62HIFNGPET  |
| TNF $\alpha$          | 96 tests  | 62HTNFAPET  |

Part numbers are for the smallest available assay format.  
Bulk sizes are available.

## FOR MORE INFORMATION, CONTACT:

ACCOUNT REP:

EMAIL:

PHONE:

## EXPERT SERVICES TO SATISFY YOUR EXACT NEEDS



In addition to providing ready-to-use kits with all the necessary reagents, Cisbio's team of experienced experts works hand-in-hand with its clients to create custom solutions. When you have specific requirements for Inflammation investigations, Cisbio is the ideal trusted partner to develop the assays you need.

Keep your therapeutic research moving forward with faster, more robust, physiologically relevant results. Call us or visit [www.cisbio.com/Inflammation Immunology](http://www.cisbio.com/Inflammation Immunology)

## FOR MORE INFORMATION

Europe and other countries +33(0)466 796 705 U.S. and Canada 1-888-963-4567

China +86 21 5018 9880 Japan +81-(0)43-306-8712

Visit [www.cisbio.com](http://www.cisbio.com) to find a list of our regional distributors



cisbio